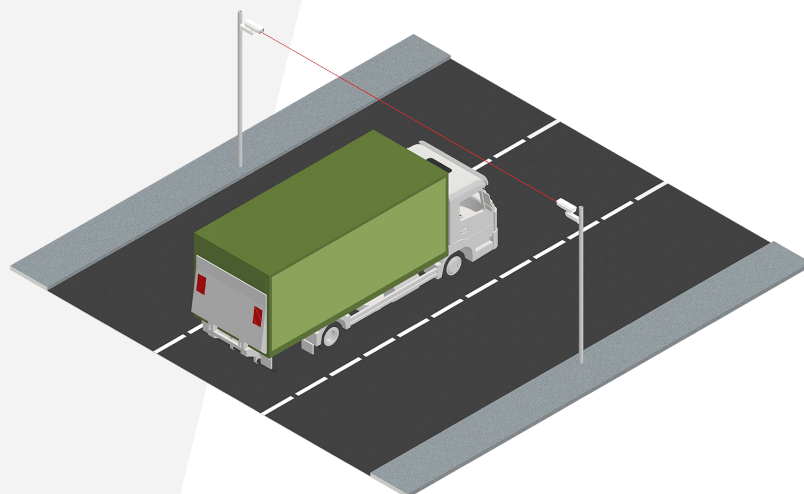


Overheight Warning Sensors

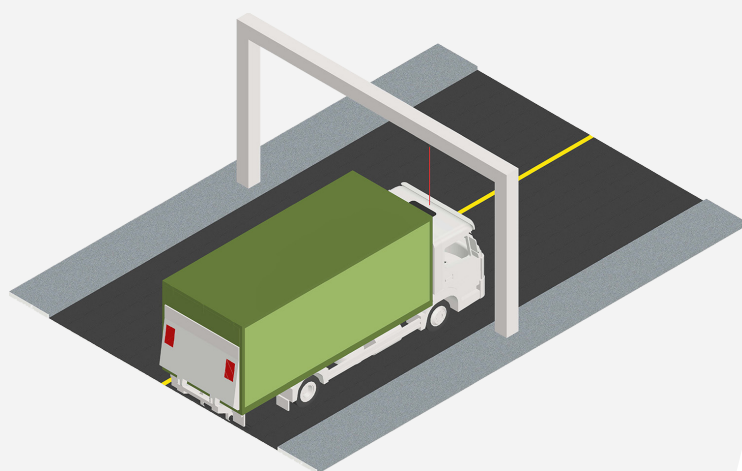
Detects vehicles exceeding a specified height limit, activating nearby warning systems to prevent potential accidents.

Well suited for tunnel systems, bridges, or low underpasses, overheight warning systems provide a reliable alert when a driver underestimates the height of their vehicle.

LaneLight overheight warning systems come in both vertical and horizontal variations.



Horizontal Sensor



Vertical Sensor

Features

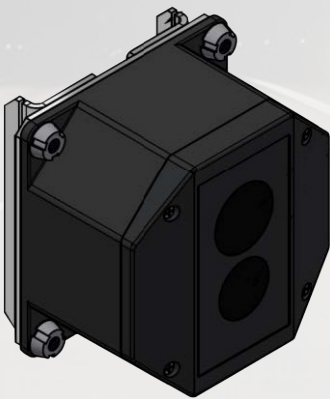
- Reliable, durable build quality with a 5-year manufacturing warranty.
- Horizontal sensors are capable of a 700ft (213m) sensing range, allowing a sensor pair to cover multiple lanes.
- Sensors are equipped with a LaneLight system controller for easy integration into accompanying systems, whether new or existing.



Horizontal Sensor

Horizontal overheight sensors emit two solid beams that extend from one sensor to another across a roadway. When both beams are broken, the sensors receive a signal. This signal triggers warning systems down the roadway, such as LED enhanced signs or flashing beacons.

Horizontal sensors can extend over very long distances, making them an excellent fit for multi-lane installations.

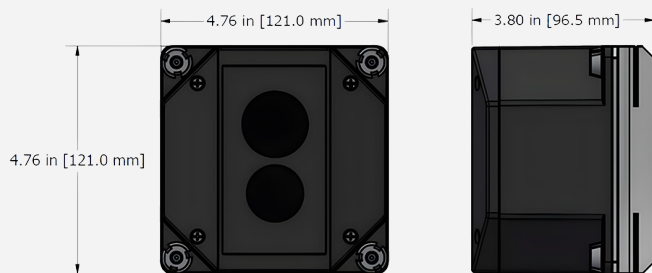
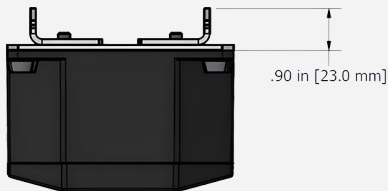
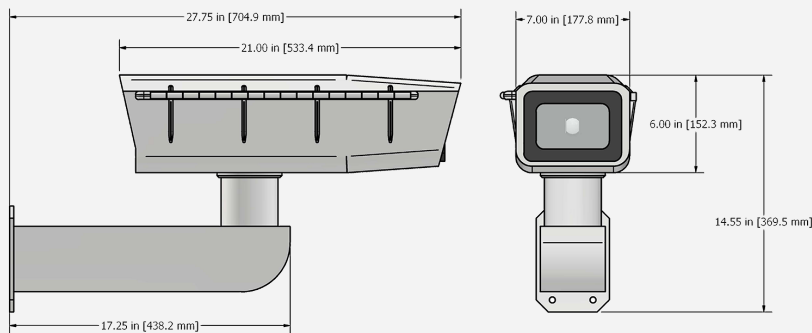


Vertical Sensor

Vertical overheight sensors feature a downward pointing, single segment detection system mounted above the roadway to a gantry or similar structure. Contrary to horizontal sensors, vertical sensors are used on a per-lane basis, with one sensor pointing downwards onto each lane.

Vertical sensors are compact, low power consumption and easy to install in a variety of applications.

Specifications



Horizontal Sensor

Housing	Air/water tight polycarbonate
Supply Voltage & Current	10 V DC to 30 V DC Emitter: <70 mA Receiver: <22 mA
Output	Load 100 mA max Protected against reverse polarity and continuous overload or short circuit of outputs
Sensing Range	700ft (213m)
Beam Type	Infrared, 875 nm
Response Time	30 milliseconds ON
Communication	Two frequencies available (A, B)
Rating	IP 67
Warranty	5-year limited warranty for defects in manufacturing, factory assembly and materials only; excludes batteries and damage caused by vehicles or vandalism

Vertical Sensor

Material	ABS plastic housing, COP plastic lens
Supply Voltage	12-30 V DC
Power Consumption	Max. 1.3 W
Beam Type	LED, conic
Beam Angle	3° (half-angle @ 50%)
Measurement Accuracy	±2 in. (±4 in. with saturated signal) ±5 cm (±10 cm with saturated signal)
Sensing Range	129ft (39m)
Response Time	5ms
Communication	RS-485 link for measurement acquisition
Rating	IP 68
Warranty	5-year limited warranty for defects in manufacturing, factory assembly and materials only; excludes batteries and damage caused by vehicles or vandalism

