

AIRFIELD SEVERE WEATHER ALARM SYSTEM

QUICK START GUIDE

Procedure

1. Open the power/control box and remove cables and accessories.

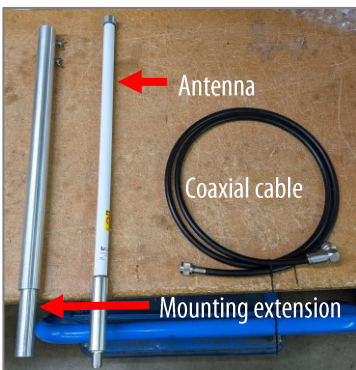


2. Unlatch the solar panel.

NOTE The solar panel will lift automatically to a 45° angle.



3. Align the solar panel with solar noon (point it where the sun is at about 12:30 p.m. local time).
4. Attach the legs to the power/control box and secure them in place with the cotter pins.
5. Secure the power/control box in place with weights or other method to keep it in place in high winds.
6. Locate the antenna components.



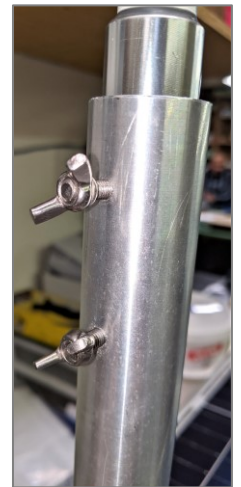
7. Insert the antenna mounting extension into the mounting base on the power/control box and tighten the thumbscrews.



Step 7

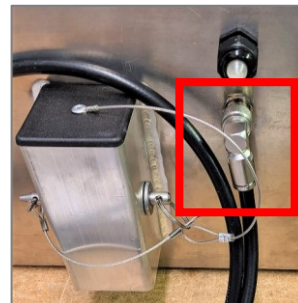


Step 8



Step 9

8. Thread the antenna cable up through the mounting tube and connect it to the antenna. Ensure the connector is tight to prevent water ingress.
9. Insert the antenna base into mounting tube and tighten the thumb screws.
10. Connect the coaxial antenna cable to the power/control box and tighten the connectors. Ensure the connector is tight to prevent water ingress.



Power control/box assembled



11. Unfold the legs on the flasher stand unit.

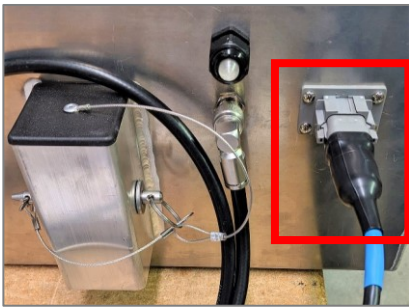
IMPORTANT Ensure they lock in the open position.



12. Place the flasher unit facing the desired direction.

13. Secure the legs of the flasher unit with weights or other method to keep it in place in high winds.

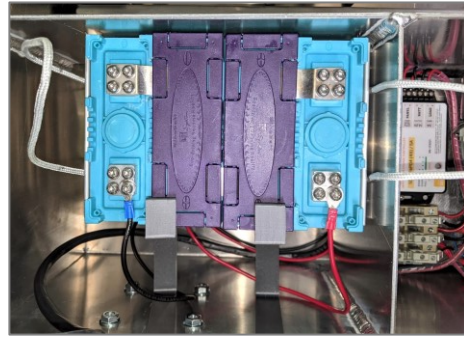
14. Connect the cable from the flasher unit to the power/control box.



15. **IMPORTANT** Inside the power/control box, verify the fuse holders are in the OPEN position. **DO NOT REMOVE THE TAPE UNTIL INSTRUCTED.**



16. Connect the battery. Black wire to – terminal, red to +.

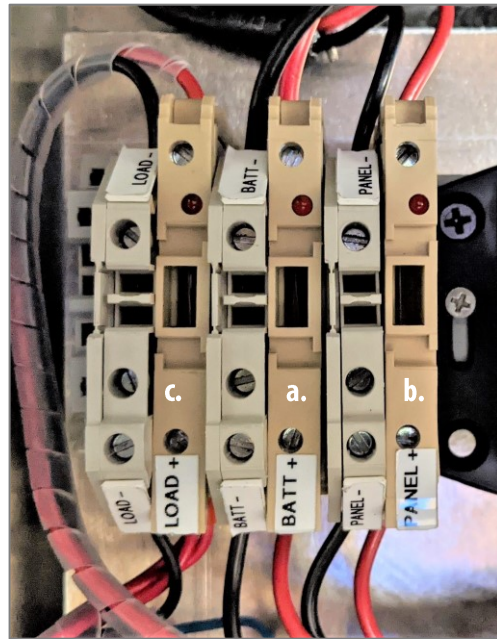


17. Inspect all connections.

18. Remove the tape from the fuse holders.

19. Close the fuse holders in the following order:

- Close the fuse holder labeled **BATT**.
- Close the fuse holder labeled **PANEL**.
- Close the fuse holder labeled **LOAD**.



The system is now live.

20. Test system operation from the control tower.