



SOLAR LED MARKERS



I-Marker 1107

Dimensions: 120 x 100 x 23 mm
4.72 x 3.94 x 0.91 inches

LED Colors: amber, red, white, blue, green

LEDs: uni-directional - 3 one side
bi-directional - 2 per side

LED Output: 2Hz flashing or steady

Lens Colors: clear

Lifespan: 3-5 years

Electrical Storage: battery



I-Marker 1207

Dimensions: 132 x 122 x 20 mm
Housing: 5.2 x 4.8 x 0.08 inches

Mounting Peg: 55 x 40 x 40 mm
2.2 x 1.57 x 1.57 inches

LED and Reflector Colors: amber, red, white, blue, green

LEDs: 2 one side, uni-directional

LED Output: 2Hz flashing or steady

Lifespan: 3-5 years

Electrical Storage: battery



I-Marker 1617

Dimensions: Diameter 140 x Height 50 mm
Diameter 5.5 x Height 2 inches
Flush mounting

LED Colors: amber, red, white

LEDs: bi-directional - 3 per side

LED Output: 2Hz flashing or steady

Lens: clear polycarbonate

Lifespan: 3-5 years

Electrical Storage: NI-MH battery



I-Marker 1717

Dimensions: 105 x 80 x 50 mm
4.13 x 3.15 x 1.97 inches
Flush mounting

LED Colors: amber, red, white

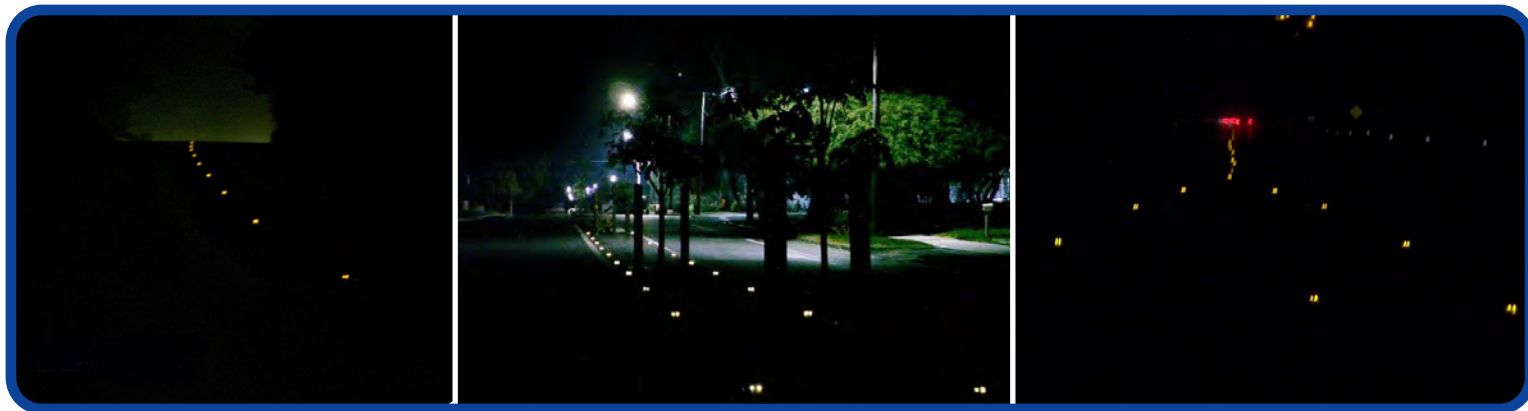
LEDs: uni-directional - 3 one side

LED Output: 2Hz flashing or steady

Lens: clear polycarbonate

Lifespan: 3-5 years

Electrical Storage: NI-MH battery



LOW COST, LOW MAINTENANCE, ENVIRONMENTALLY FRIENDLY, AND EFFECTIVE ALTERNATIVE TO OVERHEAD STREET LIGHTING.

Unlike conventional reflective road markers, I-Marker solar pavement markers do not rely on headlights to delineate the road ahead. Using bright LEDs, light from each marker can be seen at up to 100m (320ft) away during nighttime darkness.

For night or fog use, electronics in the markers monitor ambient light levels, activating the LEDs when light drops below factory preset levels. They are recharged by sunlight, and lower level light.

I-Markers provide road guidance long before normal "high-visibility" markings and reflective RPMs become visible.

Features:

- Rechargeable
- Solar-Powered
- Maintenance Free
- Durable Aluminum Housing
- Improved Driver Reaction Time
- Reduction in Accident Risk
- MUTCD Compliant
- One Year Warranty



Applications:

- Curves
- Fog Hazard Locations
- Accident Prone Areas
- Lane Marking and Guidance
- Barriers and Traffic Islands
- Bicycle and Pedestrian Trails
- Hydrant Marking
- Architectural Design



Tel: 250.381.4836
Fax: 250.381.4830
www.itemltd.com