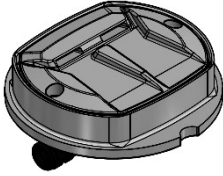


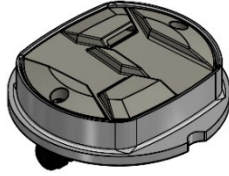
# MLK150 LED-Illuminated In-Road Markers (LaneLights™)

## CONFIGURATIONS

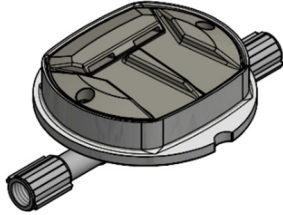
**Asphalt Uni-Directional**



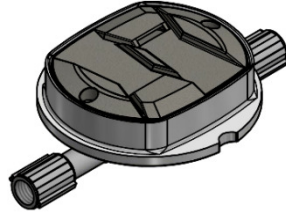
**Asphalt Bi-Directional**



**Concrete Uni-Directional**

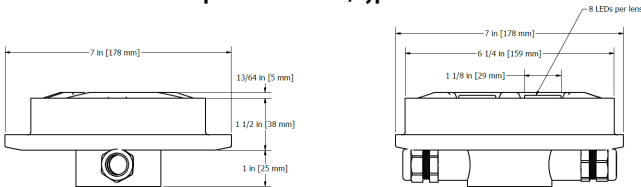


**Concrete Bi-Directional**

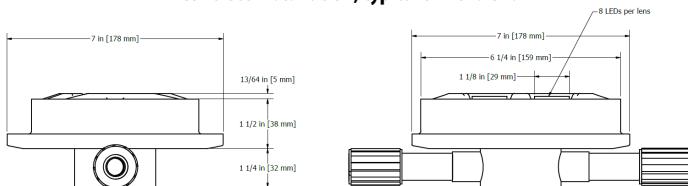


## DIMENSIONS

**Asphalt installation, typical dimensions**

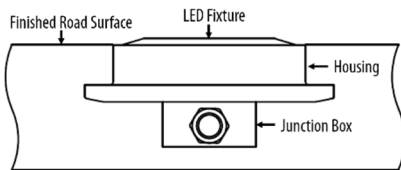


**Concrete installation, typical dimensions**



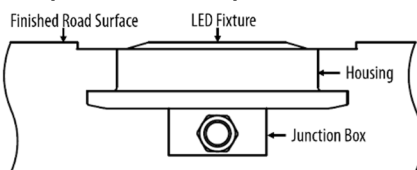
## IN-ROAD PROFILES

**Standard, non-snow-plowable installation profile**



In locations without snow plow activity, the MLK150 is installed with the top of the housing flush with the finished road surface and the LED fixture protruding above the finished road surface.

**Snow-plowable installation profile**



In locations with snow plow activity, the MLK150 is installed with the housing recessed below the level of the finished roadway and the top of the LED fixture flush with the finished road surface.

## SPECIFICATIONS

Technology	LED
Lower Housing Dimensions, including junction box	Ø 7 x 2.5 in. [Ø 175 x 66 mm]
Lower Housing Material	Aluminum, sea water grade
Upper Housing Dimensions, LED module	5.9 in. x 4.92 in. x 1.2 in. [150 x 125 x 30.5mm]
Upper Housing Material	Stainless steel (304)
In-Road Profiles	Standard: 13/64 in. [5 mm] above road surface Optional: 1/8 in. [3mm] above road surface Snow Plow: 0 in. [0mm] above road surface
Snowplow Compatible	Yes, with flush mount installation
IP Code	IP68
Load Rating	11,000 lb. [5,000 kg] compression
Operating Temperature	-13°F to +167°F [-25°C to +75°C]
LED Face	Uni-directional or bi-directional options
LEDs Per Unit	16 (8 LEDs per lens)
Beam Trajectory	V: +/- 4 degrees; H: +/- 15 degrees
LED Colour	Yellow, red, green, blue, white or bi-colour
Light Intensity	Over 3,500,000 cd/m <sup>2</sup>
Daytime Visibility	3000 ft. [914m] Dimmable by PWM at night
Operating Voltage	12-48 VDC or 9-36 VAC
Power Consumption	2.5W (nominal)
Wiring	3-wire VDC; 2-wire VAC DIN 72551 part 6: ISO 6722 class D, thin-wall ISO 6722: DIN 72551 part 5 (1993) DIN EN 13602, Cu-ETP1-A (CW003A): LV 112
Controller	LaneLight Mk4, Mk5, or Mk6 system controller
Lens	Borosilicate glass
MUTCD Compliance	YES
Warranty	5 year limited warranty for defects in manufacturing, factory assembly and materials only; excludes batteries and damage caused by vehicles or vandalism

## CONTACT INFORMATION

To order, or for more information, contact ITEM/LaneLight:

**Unit 16 – 755 Vanalman Avenue**

**Victoria, BC V8Z 3B8 Canada**

**Toll-Free: 1-866-466-4836**

**Fax: 250-381-4830**

**info@lanelight.com**

**www.lanelight.com**

