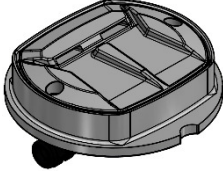


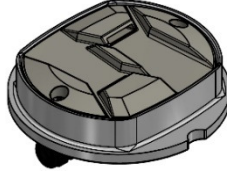
MLK150 LED-Illuminated In-Road Markers (LaneLights™)

CONFIGURATIONS

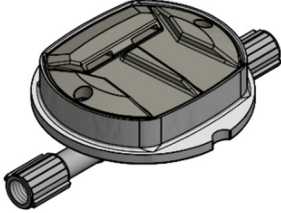
Asphalt Uni-Directional



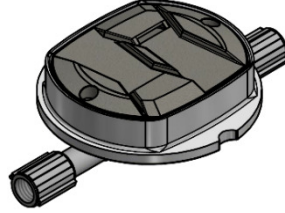
Asphalt Bi-Directional



Concrete Uni-Directional

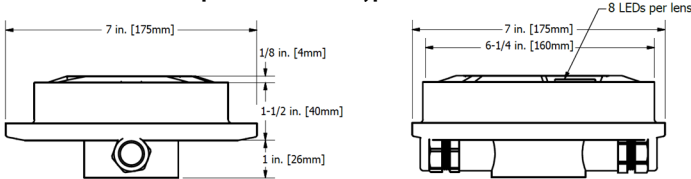


Concrete Bi-Directional

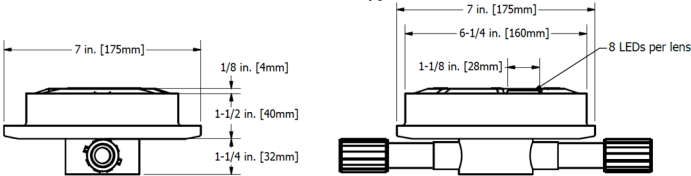


DIMENSIONS

Asphalt installation, typical dimensions

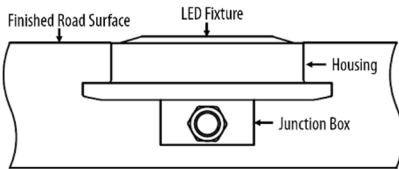


Concrete installation, typical dimensions



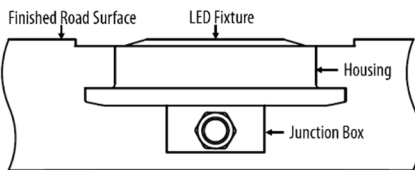
IN-ROAD PROFILES

Non-snow-plowable installation profile



In locations without snow plow activity, the MLK150 is installed with the top of the housing flush with the finished road surface and the LED fixture protruding above the finished road surface.

Snow-plowable installation profile



In locations with snow plow activity, the MLK150 is installed with the housing recessed below the level of the finished roadway and the top of the LED fixture flush with the finished road surface.

SPECIFICATIONS

Technology	LED
Dimensions - LED Module	6-1/4 in. L x 5 in. W x 1-1/4 in. H [160mm L x 125mm W x 32mm H]
Dimensions - Housing, Including Junction Box	Ø 7 in. x 2-1/2 in. H [Ø 175mm x 65mm H]
In-Road Profiles	Non-Snow-Plowable: Fixture protrudes above finished road surface 1/8-1/4 in. [4-6mm] Snow-Plowable: Flush mount installation, leveling plates are provided
Snowplow Compatible	Yes, with flush mount installation
Housing - LED Module	Stainless steel
Housing - Base	Aluminum, sea water grade
IP Code	IP68
Load Rating	5.5 tons [5,000 kg] compression
Operating Temperature	-13°F to +167°F [-25°C to +75°C]
LED Face	Uni-directional or bi-directional options
LEDs Per Unit	16
LED Colour	Yellow, red, green, blue, white or bi-colour
Light Intensity	Over 3,500,000 cd/m ²
Daytime Visibility	3000 ft. [914m] Dimmable by PWM at night
Operating Voltage	24VDC or 36VAC
Power Consumption	2.5W (nominal)
Wiring	3-wire for VDC installation 2-wire for VAC installation 18 AWG direct burial or drain equipped conduit
Controller	LaneLight Mk4 or Mk5 system controller
Lens	Borosilicate glass
MUTCD Compliance	YES
Warranty	5 year limited warranty for defects in manufacturing, factory assembly and materials only; excludes batteries and damage caused by vehicles or vandalism

CONTACT INFORMATION

To order, or for more information, contact ITEM/LaneLight:

Unit 16 – 755 Vanalman Avenue

Victoria, BC V8Z 3B8 Canada

Toll-Free: 1-866-466-4836

Fax: 250-381-4830

info@lanelight.com

www.lanelight.com

